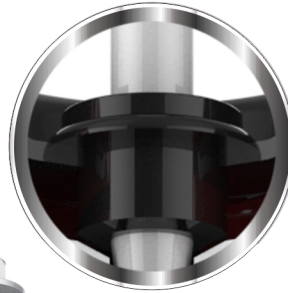


PISTON AIR DISC TYPE BRAKES

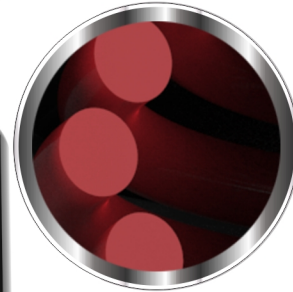
Dual Seal Design allows self-correct Alignment



Integral Release Bolt Mechanism allows Minimal Bolt Protrusion 1.25" (31.8 mm)



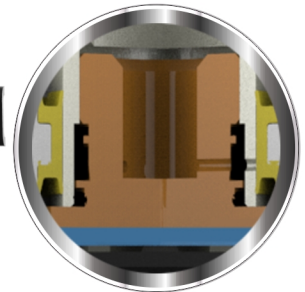
Temper Resistant Design Standard with High Pressure Leak Prevention Seal Design



Non Coil-Clash Designed Power Spring Guarantees Extreme Long Life Cycles

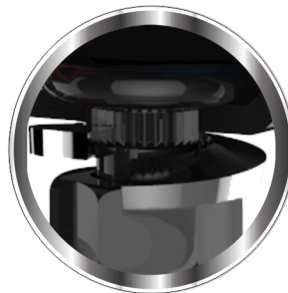
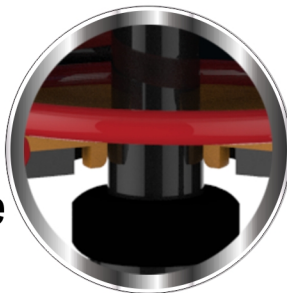


Lock-In Design Clamp Band Secures from the Leak

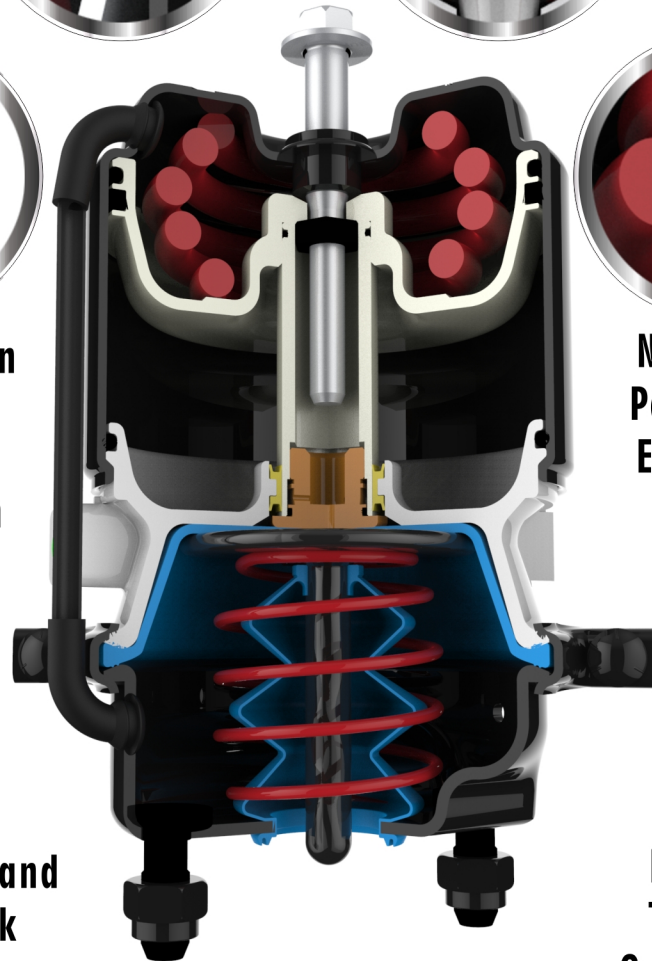


Internal Breathing Technology System Guarantees 100% free from Contamination

Integral Composite Injection Plastic Guide Guarantees Extend Durability

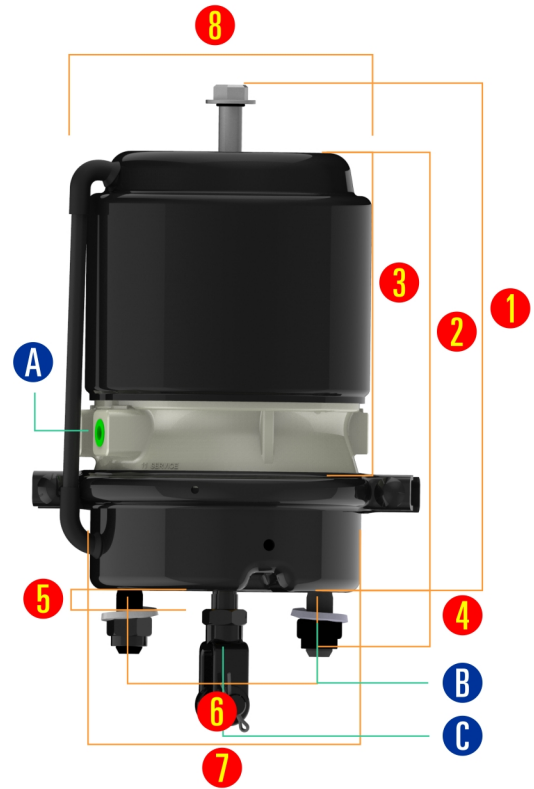


Welded Mounting Bolt enhances durability from roadside vibration



Maximum Performance Piston Air Disc Features

- *Non-Coil Clash Power Spring*
- *Increased Corrosion Resistance - Steel Head, Epoxy Coated*
- *Available with 1,922 - 2,600 Lbs. (871.8 kg - 1,179.3 kg) of Push-Rod Braking Force @ 1.25 inch (31.8mm) Stroke/Service Brake Sizes 16 - 30*
- *Heavy Duty 8 - Guage NPC Standard*
- *Integral Release Bolt Mechanism - Minimal Bolt Protrusion (Approx. 1.25 inch (31.8mm) protrusion on "Long Stroke" Models when manually released)*
- *Temper Resistant Design*
- *Lighter Weight*
- *2.5 inch Standard Stroke*
- *Compact Size*



CLASSIFY	DMPB2024DT/DI	HDMPB2424ET/EI	DMPB2424EI	DMPB3024ET/EI
SIZE	2024	2424	2424	3024
STROKE	2.5" (63.5mm)	3" (76.2mm)	3" (76.2mm)	3" (76.2mm)
Wt. lb (kg)	20.0 lb (9.07kg)	20.5 lb (9.3kg)	20.2 lb (9.2kg)	21.8 lb (9.9kg)
1	11.3"/287mm	11.7"/297mm	11.89"/302mm	11.89"/302mm
2	9.92 ± 0.12" 252 ± 3mm	10.43 ± 0.12" 265 ± 3mm	10.43 ± 0.12" 265 ± 3mm	10.43 ± 0.12" 265 ± 3mm
3	7.60 ± 0.08" 193 ± 2mm	7.95 ± 0.08" 202 ± 2mm	7.95 ± 0.08" 202 ± 2mm	7.95 ± 0.08" 202 ± 2mm
4	1.5 ± 0.08" 38 ± 2mm	1.5 ± 0.08" 38 ± 2mm	1.5 ± 0.08" 38 ± 2mm	1.5 ± 0.08" 38 ± 2mm
5	0.59 ± 0.02" 15 ± 0.5mm	1.45 ± 0.12" 37 ± 3mm	1.45 ± 0.12" 37 ± 3mm	1.45 ± 0.12" 37 ± 3mm
6	4.75 ± 0.04" 120.7 ± 1mm	4.75 ± 0.04" 120.7 ± 1mm	4.75 ± 0.04" 120.7 ± 1mm	4.75 ± 0.04" 120.7 ± 1mm
7	Ø175	Ø190	Ø190	Ø211
8	Ø171	Ø171	Ø171	Ø171
A (PORT)	M16X1.5	M16X1.5	M16X1.5	M16X1.5
B (MTG BOLT)	M16X1.5	M16X1.5	M16X1.5	M16X1.5
C (P/ROD)	-	M16X1.5	M16X1.5	M16X1.5
HOLD-OFF	4.9bar	4.9bar	4.9bar	4.9bar
Release	5.4bar	5.4bar	5.4bar	5.4bar